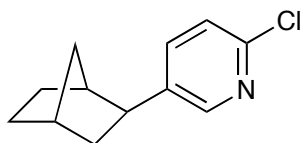


Problems from your text

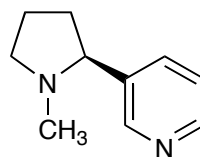
9.1, 9.2, 9.8, 9.9, 9.11, 9.14, 9.15, 9.18, 9.19, 9.21, 9.22, 9.32, 9.33, 9.38, 9.42, 9.47, 9.50, 9.53, 9.56, 9.61, 9.62, 9.65, 9.73

Additional Practice Problems

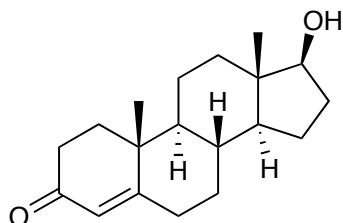
Indicate the R or S configuration for every stereocenter in the molecules shown below.



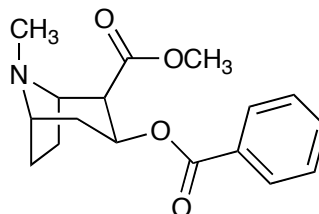
epibatidine



nicotine



Testosterone



cocaine